

## Abel Matade

Striker

Cape Agulhas FC | South African | 2012-09-07

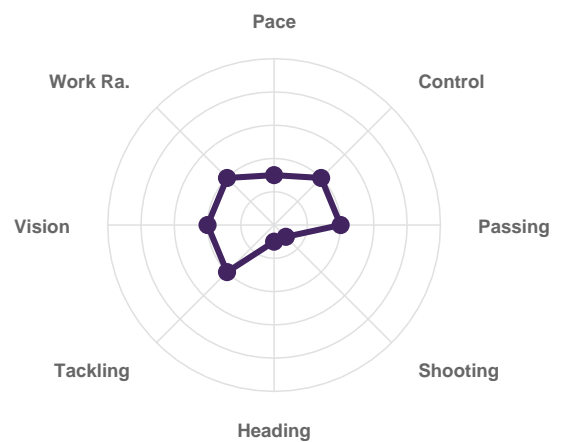
### PLAYER OVERVIEW

OVERALL GRADE

3/10

TECHNICAL AVG

3.1/10



### TECHNICAL RATINGS

#### Technical Abilities



#### Tactical Ability



#### Athletic Ability



## Character

Effort to Win Ball		5	Bravery (Physical)		3
Bravery (Mental)		3	Energetic		3
Leadership		3	Talkative		3
Competitive		3	Team Player		5

---

## MATCH CONTEXT

**Competition:** KickStart SS Avanced training

**Opponent:** Small sided games (SSG)6V6

**Conditions:** Wet,windy & uneven pitch

**Context:**

The current data in this profile is a snapshot from specific Small-Sided Games 6v6 (SSG) and technical training modules, including:

**PASS & MOVE SQUARES:** Focusing on spatial awareness and technical execution under movement.

**RONDOS:** Focusing on ball retention and processing speed in tight spaces.

**6V6 POSSESSION GAMES (20x20 GRID):** Focusing on immediate reaction to pressure and maintaining possession integrity.

Our scouting team will continue to monitor and observe the player in his natural team environment.

---

## SCOUT'S ANALYSIS

### Strengths

Excellent body shape when receiving (opens up play effectively).

Strong first touch into space or towards teammates.

Good vision and accurate short-to-mid range passing.

Effective pressing and reaction to win the ball back.

### Areas for Improvement

Improve scanning before receiving to avoid pressure.

Develop hold-up play and physical strength.

Improve right foot to become less predictable.

### Development Recommendations

Hold-Up Play:

Train on shielding the ball using body positioning (low centre of gravity, strong stance, use of arms legally to protect space).

Scanning & Awareness:

Implement scanning drills (checking shoulders before receiving, awareness of defender positioning).

Weak Foot Development:

Regular repetition-based training with the right foot to improve confidence and unpredictability in attacking situations.

### Additional Comments

Abel is a technically capable forward with strong body orientation, vision, and link-up play. His ability to receive and distribute the ball effectively, combined with his pressing intensity, suggests he can develop into a modern striker who contributes both in and out of possession.

While his goal-scoring ability could not be assessed in this session, his movement and overall football intelligence show promising potential. Abel was awarded Player of the Tournament (Hawston 2026), which reflects his impact and consistency in competitive environments.